

Portfolio Choice in Retirement: Health Risk and the Demand for Annuities, Housing, and Risky Assets

Motohiro Yogo

April 2009

PRC WP2009-02

Pension Research Council Working Paper

Pension Research Council

The Wharton School, University of Pennsylvania

3620 Locust Walk, 3000 SH-DH

Philadelphia, PA 19104-6302

Tel: 215.898.7620 Fax: 215.573.3418

Email: prc@wharton.upenn.edu

<http://www.pensionresearchcouncil.org>

For comments and discussions, I thank Andrew Abel, Franklin Allen, John Ameriks, Jeffrey Brown, David Chapman, Raquel Fonseca, Eric French, John Jones, Ahmed Khwaja, Hanno Lustig, and Olivia Mitchell. I also thank seminar participants at the Federal Reserve Bank of New York, Nomura Securities, Northwestern University, Princeton University, University of Illinois at Urbana-Champaign, University of Pennsylvania, University of Tokyo, Yale University, the 2008 Michigan Retirement Research Center Research Workshop, the 2008 Texas Finance Festival, the 2008 Summer Real Estate Symposium, the 2008 Annual Meeting of the Society for Economic Dynamics, the 2008 NBER Summer Institute Capital Markets and the Economy Workshop, and the 2008 Joint Statistical Meetings. I acknowledge financial support from the University of Pennsylvania through grants from the National Institutes of Health-National Institute on Aging (grant number P30-AG12836), the Boettner Center for Pensions and Retirement Security, the National Institutes of Health-National Institute of Child Health and Human Development Population Research Infrastructure Program (grant number R24-HD044964), and the Rodney L. White Center for Financial Research. I also acknowledge financial support from the Center for Retirement Research at Boston College through the Steven H. Sandell Grant for Junior Scholars in Retirement Research. Opinions and errors are solely those of the author and not of the institutions with whom the author is affiliated. © 2009 Pension Research Council of the Wharton School of the University of Pennsylvania. All rights reserved.

Portfolio Choice in Retirement: Health Risk and the Demand for Annuities, Housing, and Risky Assets

Motohiro Yogo

Abstract

This paper develops a consumption and portfolio-choice model of a retiree who allocates wealth among four assets: a riskless bond, a risky asset, a real annuity, and housing. Unlike previous studies that treat health expenditures as exogenous negative income shocks, this paper builds on the Grossman model to endogenize health expenditures as investments in health. I calibrate the model to explain the joint evolution of health status and the composition of wealth for retirees, aged 65 to 96, in the Health and Retirement Study. I use the calibrated model to assess the welfare gains of an actuarially fair annuity market. The welfare gain is less than 1% of wealth for the median-health retiree at age 65, and the welfare gain is about 10% of wealth for the healthiest.

Motohiro Yogo
The Wharton School, University of Pennsylvania
3620 Locust Walk
2318 Steinberg Hall-Dietrich Hall
Philadelphia, PA 19104-6367
yogo@wharton.upenn.edu

Portfolio Choice in Retirement: Health Risk and the Demand for Annuities, Housing, and Risky Assets*

Motohiro Yogo[†]

Abstract

This paper develops a consumption and portfolio-choice model of a retiree who allocates wealth among four assets: a riskless bond, a risky asset, a real annuity, and housing. Unlike previous studies that treat health expenditures as exogenous negative income shocks, this paper builds on the Grossman model to endogenize health expenditures as investments in health. I calibrate the model to explain the joint evolution of health status and the composition of wealth for retirees, aged 65 to 96, in the Health and Retirement Study. I use the calibrated model to assess the welfare gains of an actuarially fair annuity market. The welfare gain is less than 1% of wealth for the median-health retiree at age 65, and the welfare gain is about 10% of wealth for the healthiest.

*For comments and discussions, I thank Andrew Abel, Franklin Allen, John Ameriks, Jeffrey Brown, David Chapman, Raquel Fonseca, Eric French, John Jones, Ahmed Khwaja, Hanno Lustig, and Olivia Mitchell. I also thank seminar participants at the Federal Reserve Bank of New York, Nomura Securities, Northwestern University, Princeton University, University of Illinois at Urbana-Champaign, University of Pennsylvania, University of Tokyo, Yale University, the 2008 Michigan Retirement Research Center Research Workshop, the 2008 Texas Finance Festival, the 2008 Summer Real Estate Symposium, the 2008 Annual Meeting of the Society for Economic Dynamics, the 2008 NBER Summer Institute Capital Markets and the Economy Workshop, and the 2008 Joint Statistical Meetings. I acknowledge financial support from the University of Pennsylvania through grants from the National Institutes of Health-National Institute on Aging (grant number P30-AG12836), the Boettner Center for Pensions and Retirement Security, the National Institutes of Health-National Institute of Child Health and Human Development Population Research Infrastructure Program (grant number R24-HD044964), and the Rodney L. White Center for Financial Research. I also acknowledge financial support from the Center for Retirement Research at Boston College through the Steven H. Sandell Grant for Junior Scholars in Retirement Research.

[†]University of Pennsylvania and National Bureau of Economic Research
E-mail: yogo@wharton.upenn.edu

JEL classification: D14, G11, I10, J26

Keywords: Aging, Annuity, Health, Medical expenditure, Portfolio choice

First draft: November 9, 2007

This draft: December 1, 2008

1. Introduction

As Baby Boomers approach retirement, the merit of retirement financial products, in particular annuities, has been a hot topic of debate in industry and public policy. Yet, little is understood about the asset allocation of retirees. In a world with uncertainty only over the time of death, a retiree without a bequest motive should fully annuitize wealth (Yaari, 1965). Davidoff, Brown, and Diamond (2005) generalize the result by showing that full annuitization is optimal as long as markets are complete. In reality, retirees own more complicated portfolios allocated across four major asset classes: bonds (including cash), risky assets (including private businesses and stocks), annuities (mostly in the form of defined benefit pension plans and Social Security), and housing.

The primary risk that retirees face is health, which is inherently uninsurable and therefore makes markets incomplete. On the one hand, adverse health shocks require health expenditures to partially restore health. On the other hand, good health leads to longevity risk, that is, the risk of outliving one's financial wealth. In addition to health risk, a bequest motive may play a role in portfolio choice. Although there is a large literature on how labor-income risk affects the portfolio choice of working households, there has been relatively little work on how health risk affects the portfolio choice of retirees.

This paper develops a consumption and portfolio-choice model to explain the joint evolution of health status and the composition of wealth in retirement. Following the seminal work of Grossman (1972), I model health as a durable consumption good and health expenditures as investments in health. Health insurance is taken into account through the price of health expenditure in relation to consumption. Essentially, I extend the Grossman model to allow for portfolio choice between a riskless bond, a risky asset, a real annuity, and housing. Using data on general health status and asset holdings in the Health and Retirement Study (HRS), I calibrate the model to a population of retired unmarried females, aged 65 to 96. The model explains the cross-sectional distribution of health status together with asset allocation as a function of age and health status.

Previous work has shown that uncertainty over health expenditures can crowd out the demand for annuities and explain precautionary saving in liquid assets.¹ However, this finding is based on a model in which health expenditures are essentially exogenous negative income shocks. When health expenditures are endogenized as investments in health, the precautionary motive to save in liquid assets essentially disappears. This is because the retiree can invest directly in health by accumulating health capital, rather than indirectly by accumulating liquid assets. As a consequence, the bequest motive becomes a relatively important ingredient in explaining the significant holdings of liquid assets that is observed in the data.

Are retirees currently under-annuitized? What would be the demand for annuities in a world with an actuarially fair annuity market? These questions cannot be answered by a model in which health expenditures are exogenous because an alternative market structure can change the endogenous accumulation of health. I use the calibrated Grossman model to assess the welfare gains of an actuarially fair annuity market. I find that the welfare gain is less than 1% of wealth for the median-health retiree at age 65, and the welfare gain is about 10% of wealth for the healthiest. Because the welfare gain is small except for the healthiest retirees, the lack of demand for private annuities is less of a puzzle.

The remainder of the paper proceeds as follows. Section 2 develops a model of consumption and portfolio choice in retirement. Section 3 describes the relevant measures of health expenditures, health status, and asset holdings in the HRS. Section 4 presents the calibration and solution of the model. Section 5 presents a welfare analysis of an actuarially fair annuity market. Section 6 concludes.

¹See Hubbard, Skinner, and Zeldes (1994), Palumbo (1999), De Nardi, French, and Jones (2006), and Ameriks, Caplin, Laufer, and Van Nieuwerburgh (2007) for an analysis of precautionary saving in bonds due to uncertain health expenditures. The analysis has been extended to include portfolio choice between bonds, risky assets, and annuities (Edwards, 2005; Love and Perozek, 2007; Pang and Warshawsky, 2007; Turra and Mitchell, 2004).

2. A Model of Consumption and Portfolio Choice in Retirement

This section describes a model of consumption and portfolio choice in retirement. The key innovation, relative to previous models, is that health expenditure is a decision variable for the retiree. Consequently, the model allows for the endogenous accumulation of health. Picone, Uribe, and Wilson (1998) develop a related model in which the retiree can only save in a riskless bond, that is, a model without portfolio choice.

2.1 Housing

Although housing is the most important tangible asset for retirees, it has been ignored in previous analysis of portfolio choice in retirement. Cocco (2005), Hu (2005), and Yao and Zhang (2005) develop life-cycle models that incorporate housing in portfolio choice, but they focus on labor-income risk and abstract from health risk that is the main concern for retirees.

Let D_t denote the housing stock at the beginning of period t . The stock D_t incorporates both the size and the quality of the house. In each period t , the house depreciates at a constant rate $\delta \in (0, 1]$. The retiree makes a net investment E_t in the house, which can be negative in the case of disinvestment. The accumulation equation for housing is

$$D_t = (1 - \delta)D_{t-1} + E_t, \tag{1}$$

given an initial stock D_0 .

2.2 Health

Following Grossman (1972), the retiree's health is modeled as a durable consumption good. Let H_t denote the health stock at the beginning of period t . In each period t , health depreciates at a stochastic rate $\omega_t \leq 1$. The retiree dies if $\omega_t = 1$, that is, if her health

depreciates entirely. The retiree's maximum possible lifetime is T so that $\omega_{T+1} = 1$ with certainty.

After the health shock is realized in period t , the retiree makes an investment I_t in health if she is still alive.² Let $1\{\omega_t < 1\}$ be an indicator function that takes the value one if the retiree survives period t , and let $1\{\omega_t = 1\} = 1 - 1\{\omega_t < 1\}$. The accumulation equation for health is

$$H_t = (1 - \omega_t)H_{t-1} + 1\{\omega_t < 1\}I_t, \quad (2)$$

given an initial stock H_0 .

2.3 Consumption and Portfolio-Choice Problem

2.3.1 Budget Constraint

The retiree enters each period t with financial wealth W_t . The retiree uses wealth for consumption C_t , housing investment E_t at the relative price P_t , and health investment I_t at the relative price Q_t . The retiree saves the wealth remaining after consumption in N financial assets. For each asset i , let A_{it} denote the retiree's savings at the end of period t . Let $R_{i,t+1}$ denote its gross rate of return from period t to $t + 1$. The intraperiod budget constraint is

$$\sum_{i=1}^N A_{it} = W_t - C_t - P_t E_t - Q_t I_t. \quad (3)$$

The intertemporal budget constraint is

$$W_{t+1} = \sum_{i=1}^N A_{it} R_{i,t+1}, \quad (4)$$

²A natural constraint to impose on health is a disinvestment constraint, $I_t \geq 0$. However, this constraint does not bind in practice because health depreciates at a sufficiently high rate for individuals in retirement age. I therefore ignore the constraint, avoiding previous health stock as an additional state variable of the problem.

given initial wealth W_1 .

2.3.2 Intraproduct Utility

In each period that the retiree is alive, her utility flow is given by

$$U(C, D, H) = [(1 - \alpha)(C^{1-\phi}D^\phi)^{1-1/\rho} + \alpha H^{1-1/\rho}]^{1/(1-1/\rho)}, \quad (5)$$

where $\phi \in (0, 1)$ and $\alpha \in (0, 1)$. The parameter $\rho \in (0, 1]$ is the elasticity of substitution between consumption and health. The restriction $\rho \leq 1$ assures that the marginal utility of health becomes unbounded as the health stock approaches zero, so that the retiree never desires intentional death.

2.3.3 Utility Maximization Problem

If the retiree survives period t , she experiences a utility flow $U(C_t, D_t, H_t)$. If she dies in period t , she leaves behind *tangible wealth*,

$$\bar{W}_t = W_t + (1 - \delta)P_t D_{t-1}, \quad (6)$$

which is the sum of financial and housing wealth. The retiree has a joy-of-giving bequest utility over tangible wealth. Abel and Warshawsky (1988) show that a joy-of-giving bequest motive can be interpreted as a reduced form for an altruistic bequest motive.

The retiree maximizes the objective function

$$\mathbf{E}_1 \left[\sum_{t=1}^{T+1} \beta^{t-1} \prod_{s=2}^{t-1} 1\{\omega_s < 1\} \left(1\{\omega_t < 1\} \frac{U(C_t, D_t, H_t)^{1-\gamma}}{1-\gamma} + 1\{\omega_t = 1\} \frac{(\bar{u}\bar{W}_t)^{1-\gamma}}{1-\gamma} \right) \right]. \quad (7)$$

The parameter $\beta \in (0, 1)$ is the subjective discount factor, and $\gamma > 1$ is the relative risk aversion. The parameter $\bar{u} > 0$ controls the strength of the bequest motive, which disappears as $\bar{u} \rightarrow \infty$.

2.4 Transforming the Problem in Terms of Total Wealth

As stated above, financial wealth, housing stock, and health stock are all state variables of the consumption and portfolio-choice problem. The problem can be simplified significantly by collapsing the three state variables into one state variable called *total wealth*. The retiree's total wealth at the beginning of period t is

$$\widetilde{W}_t = W_t + (1 - \delta)P_t D_{t-1} + (1 - \omega_t)Q_t H_{t-1}. \quad (8)$$

In words, total wealth is the sum of financial wealth, housing wealth, and health capital. In the period in which she dies, the retiree's total wealth is equal to tangible wealth, that is, $\widetilde{W}_t = \overline{W}_t$.

Define savings in housing and health in period t as

$$A_{Dt} = P_t D_t, \quad (9)$$

$$A_{Ht} = Q_t H_t. \quad (10)$$

Then the intraperiod budget constraint (3) can be rewritten as

$$\sum_{i=1}^N A_{it} + A_{Dt} + A_{Ht} = \widetilde{W}_t - C_t. \quad (11)$$

Define the gross rates of return on housing and health from period t to $t + 1$ as

$$R_{D,t+1} = \frac{(1 - \delta)P_{t+1}}{P_t}, \quad (12)$$

$$R_{H,t+1} = \frac{(1 - \omega_{t+1})Q_{t+1}}{Q_t}. \quad (13)$$

Then the intertemporal budget constraint (4) can be rewritten as

$$\widetilde{W}_{t+1} = \sum_{i=1}^N A_{it} R_{i,t+1} + A_{Dt} R_{D,t+1} + A_{Ht} R_{H,t+1}. \quad (14)$$

The utility flow (5) in period t can be rewritten as

$$U_t(C_t, A_{Dt}, A_{Ht}) = C_t \left[(1 - \alpha) \left(\frac{A_{Dt}}{P_t C_t} \right)^{\phi(1-1/\rho)} + \alpha \left(\frac{A_{Ht}}{Q_t C_t} \right)^{1-1/\rho} \right]^{1/(1-1/\rho)}. \quad (15)$$

Let $A_t = \{A_{1t}, \dots, A_{Nt}, A_{Dt}, A_{Ht}\}$ be the set of savings in all assets, including housing and health. The Bellman equation is

$$J_t(\widetilde{W}_t) = \max_{C_t, A_t} \frac{U_t(C_t, A_{Dt}, A_{Ht})^{1-\gamma}}{1-\gamma} + \beta \mathbf{E}_t \left[1\{\omega_{t+1} < 1\} J_{t+1}(\widetilde{W}_{t+1}) + 1\{\omega_{t+1} = 1\} \frac{(\overline{w} \widetilde{W}_{t+1})^{1-\gamma}}{1-\gamma} \right]. \quad (16)$$

2.5 Financial Assets

To complete the model, I specify the retiree's trading universe and portfolio constraints. The trading universe consists of three financial assets, which capture the key economic features of actual assets held by retirees.

2.5.1 Riskless Bond

The first asset is a riskless bond, which has a constant gross rate of return $R_{1t} = \overline{R}_1$. For the period 1971 to 2006, the average real return (in excess of the CPI inflation rate) on the one-year Treasury bond was 2.6%. Based on this estimate, I set $\overline{R}_1 = 1.026$.

The retiree can short the bond up to a fraction $\lambda \in [0, 1)$ of the value of the house. A short position on the bond can be interpreted as a mortgage or a home equity line of credit.

Therefore, the portfolio constraint for savings in the bond is

$$A_{1t} \in [-\lambda P_t D_t, W_t - C_t - P_t E_t - Q_t I_t]. \quad (17)$$

I calibrate the borrowing limit to be 20% of the value of the house. This value is consistent with the evidence that retirees are less able to tap into their home equity than younger working households (Sinai and Souleles, 2007).

2.5.2 Risky Asset

The second asset is a risky asset, which has a stochastic gross rate of return

$$R_{2t} = \bar{R}_2 \nu_{2t}, \quad (18)$$

where $\log \nu_{2t} \sim \mathbf{N}(-\sigma_2^2/2, \sigma_2^2)$ is independently and identically distributed (i.i.d.). For the period 1971 to 2006, the real return (in excess of the CPI inflation rate) on the Center for Research in Securities Prices value-weighted index had a mean of 7.9% and a standard deviation of 17.2%. Based on these estimates, I set $\bar{R}_2 = 1.056$ and $\sigma_2 = 0.172$. In the life-cycle consumption and portfolio-choice literature, models are commonly calibrated with an equity premium that is lower than the historical average excess stock returns (see Cocco, Gomes, and Maenhout, 2005). This practice is justified through stock-market participation costs, whether they are actual or psychological costs.

The retiree may not take a short or a leveraged position in the risky asset. Therefore, the portfolio constraint for savings in the risky asset is

$$A_{2t} \in [0, W_t - C_t - P_t E_t - Q_t I_t]. \quad (19)$$

2.5.3 Real Annuity

The third asset is a real annuity, which has a gross rate of return that is contingent on survival,

$$R_{3t} = \begin{cases} \bar{R}_3/p_t & \text{if } \omega_t < 1 \\ 0 & \text{if } \omega_t = 1 \end{cases}. \quad (20)$$

In this specification, p_t is an actuarially fair survival probability in period t , which is a deterministic function of gender, birth cohort, and age. If a unit of the annuity is defined as a claim that pays off one unit of consumption in every period until death, its actuarially fair price in period t is

$$P_{3t} = \sum_{s=1}^{T-t} \frac{\prod_{u=1}^s p_{t+u}}{\bar{R}_3^s}. \quad (21)$$

I use equation (20) to calibrate the return on the annuity, using $\bar{R}_3 = 1.026$ to match the real return on the one-year Treasury bond. The survival probabilities are those for a female born in the 1940 cohort, which are reported by the Social Security Administration (Bell and Miller, 2005, Table 7). Similarly, I use equation (21) to calibrate the price of the annuity, setting T to age 96.

Almost all individuals enter retirement with implicit holdings of annuities, either through a defined benefit pension plan or Social Security, and subsequently do not increase their holdings of annuities. I model this situation as follows. Let B_{3t} be the holdings of the annuity at the end of period t , so that savings in the annuity is $A_{3t} = P_{3t}B_{3t}$. The individual enters retirement with an endowment B_0 of the annuity. For all periods $t \geq 1$, the portfolio constraint for the annuity is $B_{3t} = B_{3,t-1}$. In Section 5, I relax this constraint and allow the retiree to purchase additional units through an actuarially fair annuity market, which corresponds to the constraint $B_{3t} \geq B_{3,t-1}$.

2.6 Relative Price of Housing

I model the gross rate of return on housing as

$$R_{Dt} = \bar{R}_D \nu_{Dt}, \quad (22)$$

where $\log \nu_{Dt} \sim \mathbf{N}(-\sigma_D^2/2, \sigma_D^2)$ is i.i.d. The dynamics of the relative price of housing is then determined by equation (12), normalizing the initial price level at $P_1 = 1$.

Using equation (12) and the Bureau of Economic Analysis's depreciation rate of 1.14% on residential capital, I compute the return on the Case-Shiller Composite-10 Home Price Index. For the period 1988 to 2006, the real housing return (in excess of the CPI inflation rate) had a mean of 2.2% and a standard deviation of 7.0%. Based on these estimates, I set $\bar{R}_D = 1.022$ and $\sigma_D = 0.070$.

3. Health and Retirement Study

3.1 Sample

The HRS is a panel survey designed to study the health and wealth of the elderly in the United States. I use the RAND HRS data files, which is a version of the HRS cleaned and processed by the RAND Center for the Study of Aging. I use the first six waves of the HRS, which cover the period 1992 to 2002. I focus on those born 1901 to 1940, which includes the cohorts associated with Study of Assets and Health Dynamics Among the Oldest Old (born before 1924), the Children of Depression (born 1924 to 1930), and the initial HRS (born 1931 to 1941).

I focus my analysis on the sample of retired unmarried females, aged 65 to 96. The focus on unmarried individuals is dictated by the fact that married individuals maximize a more complicated objective function that depends on the health and survival of the spouse. The focus on females is dictated by the fact that females live longer than males, and hence, have

a longer (and arguably more interesting) retirement cycle. The focus on retirees younger than 96 is dictated by the fact that there are very few survivors in the data set beyond that age.

Because retirees are interviewed every two years, I code age in groups of two years from the 65–66 to the 95–96 age group. Hence, there are a total of 16 periods in the retirement cycle, indexed as $t = 1, \dots, 16$. All empirical analysis uses the person-level analysis weight to weight observations.

3.2 Descriptive Statistics for Health Expenditure

Retirees in the HRS are asked to report various measures of health every two years. The chosen measure of health for my study is the self-reported general health status, which is categorized as poor, fair, good, very good, or excellent. Insofar as health enters the retiree’s utility function, self-reported health status is a relevant measure of health for mapping the model to the data. As reported in Wallace and Herzog (1995), self-reported health status is highly correlated with objective measures of physical and mental health. Moreover, it is a significant predictor of future mortality as reported below.

The RAND HRS data set contains a measure of total health expenditures on hospitals, nursing homes, doctor visits, dentist visits, outpatient surgery, prescription drugs, home health care, and special facilities. It also contains a measure of out-of-pocket health expenditures, that is, the part of total health expenditures paid for by the retiree. Almost all retirees (over 99%) report health insurance coverage through Medicare, Medicaid, or insurance from a previous employer.

Panel A of Table 1 reports the median of total health expenditures, in real 2000 dollars, by age and health status. Total health expenditures rise in age. The median health expenditure is \$2,141 per year for retirees aged 65 to 72, and \$2,399 per year for retirees aged 89 to 96. Total health expenditures also fall in health status. For retirees aged 65 to 72, the median health expenditure is \$7,813 per year for those in poor health, and \$904 per year for those

in excellent health.

Panel B reports the median of out-of-pocket health expenditures, in real 2000 dollars, by age and health status. Out-of-pocket health expenditures display the same pattern, namely, rising in age and falling in health status. In terms of magnitude, however, the decline in health status is less pronounced than that for total health expenditures. In other words, those in poor health pay a lower share out-of-pocket than those in excellent health.

To get a sense of the composition of health expenditures, Table 2 reports the percentage of retirees utilizing the indicated health care by age and health status. Panel A shows that almost all retirees visit doctors and dentists, regardless of age and health status. This fact is consistent with the view that everyone requires some minimal level of medical services for the maintenance of health and the prevention of illnesses. Panel B shows that the use of prescription drugs is rising in age and falling in health status. The same pattern holds for the use of hospitals and outpatient surgery in Panel C, and the use of nursing homes, home health care, and special facilities in Panel D. These patterns are consistent with the view that the unhealthy require extra services for the treatment for their illnesses.

3.3 Relative Price of Health Expenditure

For each retiree, I compute the out-of-pocket health expenditure share as a ratio of out-of-pocket health expenditures to total health expenditures. I use a censored regression model to estimate the out-of-pocket health expenditure share as a function of cohort dummies, health status, age, and the interaction of health status with age.

Table 3 reports the estimated regression model. On the one hand, the relation between the out-of-pocket expenditure share and health status is mostly insignificant. On the other hand, the out-of-pocket health expenditure share rises significantly in health status. This relation suggests that insurance subsidizes medical services that treat the unhealthy more so than those that maintain the health of the already healthy.

I model health insurance through the price of health expenditure in relation to consump-

tion. Let $\widehat{Q}_t(H_t^*) \in [0, 1]$ denote the predicted health expenditure share for the 1931–1940 cohort as a function of age and health status. The relative price of health expenditure is

$$Q_t = Q_1 e^{qt} \widehat{Q}_t(H_t^*), \quad (23)$$

where the initial price level is normalized as $Q_1 = 1$. For the period 1971 to 2006, the average log growth rate of the CPI for medical care relative to that for all items less medical care was 1.9%. Based on this estimate, I set $q = 0.019$.

3.4 Transition Probabilities for Health Status

In order to implement the model, I need an empirical analog to the accumulation equation for health (2). I use data on self-reported general health status and an ordered probit model to estimate the transition dynamics of health. In each period t , the retiree reports her health status H_t^* . The health status depends on a latent variable, H_t , through

$$H_t^* = \begin{cases} 0 & \text{Deceased} & \text{if} & H_t < H_P \\ 1 & \text{Poor} & \text{if} & H_P \leq H_t < H_F \\ 2 & \text{Fair} & \text{if} & H_F \leq H_t < H_G \\ 3 & \text{Good} & \text{if} & H_G \leq H_t < H_{VG} \\ 4 & \text{Very Good} & \text{if} & H_{VG} \leq H_t < H_E \\ 5 & \text{Excellent} & \text{if} & H_E \leq H_t \end{cases}. \quad (24)$$

(See Wagstaff (1986) and Khwaja (2002) for a similar approach.) I model $\log H_t$ as a function of cohort dummies, health status at $t - 1$, age, and the interaction of health status at $t - 1$ with age. I also control for log total health expenditure at t , where expenditures below \$500 are truncated at \$500.

Table 4 reports the estimated probit model. As is expected, health status at t is positively related to health status at $t - 1$. In other words, retirees in poor health on average remain

in poor health. The coefficient on age is negative, which implies that health status declines in age. The coefficient on total health expenditures is positive, which implies that health expenditures are indeed investments that improve health status.

Using the estimated probit model, I compute the transition probabilities for health status, $\Pr(H_t^*|H_{t-1}^*)$, in the absence of health expenditures. The predicted probabilities are those for the 1931–1940 cohort with health expenditures below \$500. Figure 1 plots the transition probabilities by age for each category of health status. Mortality is related to health status in a natural way. Conditional on being in poor health, death is the most likely outcome in the subsequent period. Conditional on being in excellent health, death is the least likely outcome in the subsequent period.

3.5 Asset Allocation in Retirement

Retirees in the HRS report holdings of four major asset classes. The first asset class is “bonds”, which consists of checking, savings, and money market accounts; CD, government savings bonds, and T-bills; bonds and bond funds; and the safe part of IRA and Keogh accounts. From the value of bonds, I subtract the value of liabilities, which consists of all mortgages for primary and secondary residence; other home loans for primary residence; and other debt.

The second asset class is “risky assets”, which consists of businesses; stocks, mutual funds, and investment trusts; and the risky part of IRA and Keogh accounts. Following Hurd (2002), I assume that half of the value of IRA and Keogh accounts is safe, and the other half is risky.

The third asset class is “annuities”, which consists of employer pension or annuity; Social Security disability and supplemental security income; and Social Security retirement. Following Gustman, Mitchell, Samwick, and Steinmeier (1997), I use data on pension and Social Security income to impute its asset value in each retiree’s portfolio. The asset value of annuities is defined simply as the total pension and Social Security income times the price

of a real annuity (21). This imputation abstracts from the fact that not all pension income is indexed to the CPI.

The fourth asset class is “housing”, which consists of primary and secondary residence.

I use a censored regression model to estimate the portfolio share in each of the four assets as a function of cohort dummies, health status, age, and the interaction of health status with age. Table 5 reports the estimated regression models. Older retirees have a higher share of their portfolio in bonds, a higher share in risky assets, a lower share in annuities, and a higher share in housing. Healthier retirees have a higher share of their portfolio in bonds, a higher share in risky assets, a lower share in annuities, and a higher share in housing.³

For ease of comparison to the model in later analysis, Figure 2 plots the portfolio shares in each of the four assets as a function of age and health status. The predicted portfolio shares are those for the 1931–1940 cohort. Retirees allocate a significant share of their wealth to bonds and risky assets, even late in the retirement cycle. This fact has been attributed to both a bequest motive and a precautionary saving motive in response to health uncertainty.

Housing remains a significant share of the portfolio, even late in the retirement cycle. Venti and Wise (1989, 2004) find that retirees are unlikely to discontinue home ownership, and on average, increase their home equity when they move. Based on this evidence, Venti and Wise conclude that the large home equity in the retirement portfolio is not a consequence of transactions costs that prevent retirees from downsizing their homes.

4. Benchmark Calibration of the Model

4.1 Calibration of Preferences

Table 6 summarizes the key parameters in the benchmark calibration. Following a standard practice in the life-cycle consumption and portfolio-choice literature, I set the subjective

³Hurd (2002) and Coile and Milligan (2006) also document asset allocation in the HRS, but they ignore the asset value of annuities in their analysis. Rosen and Wu (2004) document evidence that the portfolio share in risky assets is positively related to health.

discount factor to $\beta = 0.96$. Because of the large premium on risky assets, the relative risk aversion must be fairly large in order to match the asset allocation between bonds and risky assets. I therefore set $\gamma = 6$. These choices are consistent with the structural estimates in De Nardi, French, and Jones (2006).

If $\rho < 1/\gamma$, consumption and health are complements in the sense that the marginal utility of consumption rises in the health stock. If $\rho > 1/\gamma$, consumption and health are substitutes. Introspection suggests that consumption and health must be complements at an extremely low level of health stock that approaches death. Viscusi and Evans (1990) analyze a survey of chemical workers and find that consumption and health are complements. Based on this evidence, I set the elasticity of substitution to $\rho = 0.1$. As discussed below, I calibrate the remaining preference parameters to match certain empirical moments describing health accumulation and asset allocation.

I discretize the health stock as a grid over five values, corresponding to the five categories of health status. I normalize the initial distribution of health at age 65–66 so that $\log H_1 \sim \mathbf{N}(0, 1)$. By inverting the lognormal distribution function, I obtain the health stock for each category of health status, which are reported in Table 6.

4.2 Consumption and Portfolio Policy

I solve the model through numerical dynamic programming as described in Appendix A. In each period t , the state variables of the consumption and portfolio-choice problem are total wealth \widetilde{W}_t , initial annuity holdings B_0 , and the relative price of housing P_t . For the purposes of solving the problem, it is convenient to replace total wealth with the health stock H_t as a state variable.

Figure 3 shows the consumption policy function, as a share of total wealth, at age 65–66. Holding initial annuity holdings constant, the retiree consumes a higher share of total wealth when she is healthier. This result is due to the fact that consumption and health are complements in the retiree’s utility function.

Figure 3 also shows the portfolio policy functions, as a share of total savings, at age 65–66. The policy functions for bonds and risky assets mirror that for the annuity. At high health and low initial annuity holdings, the portfolio shares in bonds and risky assets are high. At low health and high initial annuity holdings, the portfolio share in the annuity is high. When the retiree cannot purchase additional units of the annuity, she holds a portfolio of bonds and risky assets as an imperfect substitute to insure against longevity risk.

4.3 Distribution of Health Status

In order to calibrate the model, it is useful to first document the cross-sectional distribution of health status in the HRS. I use an ordered probit model to estimate the distribution of health status as a function of cohort dummies and age. The left panel of Figure 4 plots the cross-sectional distribution of health status by age for the 1931–1940 cohort.

Using the optimal consumption and portfolio policies, I simulate a population of retirees from age 65–66 to death. In the simulation, I set the initial distribution of health status at age 65–66 to exactly match the empirical distribution of health status. By varying the initial annuity holdings, it is possible to generate cross-sectional variation in financial wealth that is independent of health. However, I abstract from this additional source of cross-sectional heterogeneity and focus on the unconditional relation between portfolio choice and health. Insofar as health and wealth are highly correlated in the data, the absence of variation in wealth that is independent of health is a reasonable restriction of the simulated model. Appendix A contains further details on the simulation.

The parameter α plays a role in determining the share of health in the retiree’s portfolio, and consequently, the accumulation of health over the retirement cycle. A higher value of α implies greater accumulation in health. I calibrate this parameter to match, as closely as possible, the cross-sectional distribution of health status at age 91–92. The right panel of Figure 4 plots the cross-sectional distribution of health status at each age for the simulated model.

4.4 Asset Allocation of Simulated Retirees

Figure 5 shows the asset allocation of simulated retirees as a function of age and health status. The figure compares favorably to that of actual retirees in the HRS, shown in Figure 2. With a limited set of parameters, it is impossible to match all the empirical moments describing asset allocation. I therefore focus on those at the beginning of retirement, at age 65–66, and those at the end of retirement, at age 91–92. For ease of comparison to the data, Table 7 reports the portfolio shares in each of the four tangible assets at age 65–66. Table 8 reports the same at age 91–92.

For each health status, I calibrate the initial annuity holdings B_0 to match the portfolio share in annuity at age 65–66. Upon death, the retiree leaves behind only bonds, risky assets, and housing. Therefore, the bequest motive plays a key role in determining the portfolio share in annuity as the retiree approaches death. I choose the value $\bar{u} = 0.17$ to match the portfolio share in annuity for the median-health retiree at age 91–92.

In the model, housing is an attractive asset because the retiree can enjoy its utility flow while alive and also leave it as a bequest. The parameter ϕ plays a key role in determining the portfolio share in housing. I choose the value $\phi = 0.1$ to match the portfolio share in housing for the median-health retiree at age 91–92.

One potentially important feature of housing that is missing from the model is illiquidity, that there may be transactions costs involved in selling the house.⁴ Transactions costs would make liquid assets, such as bonds and risky assets, more attractive relative to housing. Although this extension can change the relative asset allocation between bonds, risky assets, and housing, the overall level of precautionary savings in these assets should not be affected.

⁴See Cocco (2005), Hu (2005), and Yao and Zhang (2005) for an analysis of housing and portfolio choice with transactions costs.

4.5 Importance of the Bequest Motive

In order to assess the importance of the bequest motive, I solve the model without a bequest motive, setting the parameter $\bar{u} = \infty$. I keep the other parameters of the model the same as those in the benchmark calibration. Figure 6 shows the asset allocation of simulated retirees as a function of age and health status. A comparison to Figure 5 shows that the absence of a bequest motive drastically alters the retirement portfolio. In addition to her endowment in the annuity, a healthy retiree holds mostly risky assets and housing. An unhealthy retiree holds mostly housing. Most retirees hold a small short position in bonds, representing a loan against their home equity.

This analysis shows that the bequest motive is the primary reason that retirees hold bonds and risky assets. This finding is in contrast to earlier work that emphasized a precautionary motive driven by uncertain health expenditures (Hubbard, Skinner, and Zeldes, 1994; Palumbo, 1999; De Nardi, French, and Jones, 2006). The conclusions of the earlier work relied on the assumption that health expenditures are exogenous and unavoidable. When health expenditures are endogenized as investments in health, the precautionary motive to save in liquid assets essentially disappears. This is because the retiree can invest directly in health by accumulating health capital, rather than indirectly by accumulating liquid assets.

5. Welfare Analysis of an Actuarially Fair Annuity Market

In the analysis so far, the retiree is constrained to hold a constant endowment of the annuity throughout retirement. I now relax this constraint and allow the retiree to purchase additional units through an actuarially fair annuity market. In terms of the model, this amounts to relaxing the portfolio constraint on the annuity to be $B_{3t} \geq B_{3,t-1}$.

Figure 7 shows the asset allocation of simulated retirees as a function of age and health status. A comparison to Figure 5 shows that the presence of an actuarially fair annuity

market causes a relatively small change in the retirement portfolio. The biggest change occurs for retirees in excellent health, who substitute bonds with the annuity.

How much additional wealth does a retiree require at age 65 to achieve the same level of expected utility over retirement as in a hypothetical world with an actuarially fair annuity market? I evaluate the welfare gains of an annuity market by comparing the solution in the benchmark model with that in the model with an actuarially fair annuity market. The welfare gains, as a percentage of initial wealth in the benchmark model, is 0% for retirees in poor or fair health, 0.1% for retirees in good health, 8.6% for retirees in very good health, and 10.4% for retirees in excellent health.

This calculation should be considered an upper bound on the welfare gains from a private annuity market. Because of adverse selection and transactions costs, the private annuity market offers a lower rate of return than an actuarially fair annuity market based on Social Security life tables and the Treasury bond rate (Warshawsky, 1988; Mitchell, Poterba, Warshawsky, and Brown, 1999). Because the welfare gain is small except for the healthiest retirees, the lack of demand in the private annuity market is less of a puzzle.

6. Conclusion

In a model with uncertainty only over the time of death, Friedman and Warshawsky (1990) showed that a bequest motive is necessary to explain the lack of annuitization, especially late in the retirement cycle. The subsequent literature argued that uncertainty over health expenditures can explain the lack of annuitization, even in the absence of a bequest motive. By endogenizing health accumulation, this paper has shown that previous studies, based on a model with exogenous health expenditures, overstate the importance of the precautionary motive to save in liquid assets. In a world with endogenous health accumulation, the retiree can invest directly in health capital through health expenditures, rather than indirectly by holding liquid assets. Consequently, a fairly strong bequest motive is necessary to explain the

lack of annuitization, more consistent with the earlier findings of Friedman and Warshawsky.

I calibrate the consumption and portfolio-choice model to match the joint evolution of health status and the composition of wealth for retired unmarried females, aged 65 to 96, in the HRS. I then use the calibrated model to assess the welfare gains from an actuarially fair annuity market. The welfare gain is fairly small for most retirees, and even for healthiest, the welfare gain is only about 10% of wealth at age 65. Because the implicit holdings of annuities through defined benefit pension plans and Social Security are already large, the low demand for private annuities is a rational choice for the median-health retiree. A policy implication of the findings is that retirees, especially those in poor health whose expected horizon is short, should be allowed to receive some of their Social Security benefits in lump sum, rather than as an annuity (see Brown, Casey, and Mitchell, 2007, for supportive survey evidence).

There are several issues that I have not examined, which are worth addressing in future work. First, the model should be extended to encompass married households, in which consumption and portfolio choice depends on the health and survival of the spouse (Lillard and Weiss, 1997; Jacobson, 2000; Love, 2008). Second, the horizon should be extended to include the working life before retirement. Both health status and access to health insurance can affect the timing of retirement, and consequently, consumption and portfolio decisions.⁵ Finally, the model can be used to assess the welfare implications of other retirement financial products, such as variable annuities and reverse mortgages.

⁵Bound (1991), Bound, Schoenbaum, Stinebrickner, and Waidmann (1999), Dwyer and Mitchell (1999), and McGarry (2004) provide evidence on the relation between retirement and health status. Madrian (1994) and Rogowski and Karoly (2000) provide evidence, and French and Jones (2004) and Blau and Gilleskie (2003) develop models, on the relation between retirement and health insurance.

Appendix A. Solution of the Consumption and Portfolio-Choice Problem

A.1 Rescaling the Model by Total Wealth

Because the utility function is homothetic, it is convenient to rescale the consumption and portfolio-choice model by total wealth. Define rescaled consumption as $c_t = C_t/\widetilde{W}_t$. For each asset $i = 1, \dots, N, D, H$, define the portfolio share of total savings as $a_{it} = A_{it}/(\widetilde{W}_t - C_t)$.

The intraperiod budget constraint (11) can be rewritten as

$$\sum_{i=1}^N a_{it} + a_{Dt} + a_{Ht} = 1. \quad (25)$$

The intertemporal budget constraint (14) can be rewritten as

$$\frac{\widetilde{W}_{t+1}}{\widetilde{W}_t} = R_{t+1}(1 - c_t), \quad (26)$$

where

$$R_{t+1} = \sum_{i=1}^N a_{it}R_{i,t+1} + a_{Dt}R_{D,t+1} + a_{Ht}R_{H,t+1} \quad (27)$$

is the gross rate of return on total wealth.

In the model with an actuarially fair annuity market, the portfolio constraints are

$$a_{1t} \in [-\lambda a_{Dt}, 1 - a_{Dt} - a_{Ht}], \quad (28)$$

$$a_{2t} \in [0, 1 - a_{Dt} - a_{Ht}], \quad (29)$$

$$a_{3t} \in \left[\frac{P_{3t}B_{3,t-1}}{\widetilde{W}_t(1 - c_t)}, 1 - a_{Dt} - a_{Ht} \right], \quad (30)$$

$$a_{Dt} \in \left[0, \frac{1}{1 - \lambda} \right], \quad (31)$$

$$a_{Ht} \in [0, 1]. \quad (32)$$

In the benchmark model without an annuity market, the lower bound on portfolio constraint (30) is binding. Portfolio constraint (28) and the intraperiod budget constraint can be combined as an inequality constraint,

$$a_{2t} + a_{3t} + (1 - \lambda)a_{Dt} + a_{Ht} \leq 1.$$

Define rescaled utility as

$$u_t(c_t, a_{Dt}, a_{Ht}) = c_t V_t(c_t, a_{Dt}, a_{Ht}), \quad (33)$$

where

$$V_t(c_t, a_{Dt}, a_{Ht}) = \left[(1 - \alpha) \left(\frac{a_{Dt}(c_t^{-1} - 1)}{P_t} \right)^{\phi(1-1/\rho)} + \alpha \left(\frac{a_{Ht}(c_t^{-1} - 1)}{Q_t} \right)^{1-1/\rho} \right]^{1/(1-1/\rho)}. \quad (34)$$

The marginal utility of consumption is

$$\frac{\partial u_t}{\partial c_t} = V_t - \frac{V_t^{1/\rho}}{1 - c_t} \left[(1 - \alpha) \phi \left(\frac{a_{Dt}(c_t^{-1} - 1)}{P_t} \right)^{\phi(1-1/\rho)} + \alpha \left(\frac{a_{Ht}(c_t^{-1} - 1)}{Q_t} \right)^{1-1/\rho} \right]. \quad (35)$$

The marginal utility of the portfolio share in housing is

$$\frac{\partial u_t}{\partial a_{Dt}} = \frac{(1 - \alpha) \phi c_t V_t^{1/\rho}}{a_{Dt}} \left(\frac{a_{Dt}(c_t^{-1} - 1)}{P_t} \right)^{\phi(1-1/\rho)}. \quad (36)$$

The marginal utility of the portfolio share in health is

$$\frac{\partial u_t}{\partial a_{Ht}} = \frac{\alpha c_t V_t^{1/\rho}}{a_{Ht}} \left(\frac{a_{Ht}(c_t^{-1} - 1)}{Q_t} \right)^{1-1/\rho}. \quad (37)$$

Let $a_t = \{a_{2t}, \dots, a_{Nt}, a_{Dt}, a_{Ht}\}$ be the set of portfolio shares for all assets, including

housing and health. The value function (16) can be rescaled as

$$j_t = \frac{J_t(\widetilde{W}_t)}{\widetilde{W}_t^{1-\gamma}} = \max_{c_t, a_t} \frac{u_t(c_t, a_{Dt}, a_{Ht})^{1-\gamma}}{1-\gamma} + \beta \mathbf{E}_t \left[R_{t+1}^{1-\gamma} (1-c_t)^{1-\gamma} \left(1\{\omega_{t+1} < 1\} j_{t+1} + 1\{\omega_{t+1} = 1\} \frac{\bar{u}^{1-\gamma}}{1-\gamma} \right) \right]. \quad (38)$$

The derivative of the value function with respect to consumption is

$$\frac{\partial j_t}{\partial c_t} = u_t^{-\gamma} \frac{\partial u_t}{\partial c_t} - \beta(1-\gamma) \mathbf{E}_t \left[R_{t+1}^{1-\gamma} (1-c_t)^{-\gamma} \left(1\{\omega_{t+1} < 1\} j_{t+1} + 1\{\omega_{t+1} = 1\} \frac{\bar{u}^{1-\gamma}}{1-\gamma} \right) \right]. \quad (39)$$

The derivatives of the value function with respect to the portfolio shares in financial assets are

$$\begin{aligned} \frac{\partial j_t}{\partial a_{it}} &= \beta(1-\gamma) \mathbf{E}_t [R_{t+1}^{-\gamma} (R_{i,t+1} - R_{1,t+1}) (1-c_t)^{1-\gamma} \\ &\quad \times \left(1\{\omega_{t+1} < 1\} j_{t+1} + 1\{\omega_{t+1} = 1\} \frac{\bar{u}^{1-\gamma}}{1-\gamma} \right)], \end{aligned} \quad (40)$$

for $i = 2, \dots, N$. The derivative of the value function with respect to the portfolio share in housing is

$$\begin{aligned} \frac{\partial j_t}{\partial a_{Dt}} &= u_t^{-\gamma} \frac{\partial u_t}{\partial a_{Dt}} + \beta(1-\gamma) \mathbf{E}_t [R_{t+1}^{-\gamma} (R_{D,t+1} - R_{1,t+1}) (1-c_t)^{1-\gamma} \\ &\quad \times \left(1\{\omega_{t+1} < 1\} j_{t+1} + 1\{\omega_{t+1} = 1\} \frac{\bar{u}^{1-\gamma}}{1-\gamma} \right)]. \end{aligned} \quad (41)$$

Finally, the derivative of the value function with respect to the portfolio share in health is

$$\begin{aligned} \frac{\partial j_t}{\partial a_{Ht}} &= u_t^{-\gamma} \frac{\partial u_t}{\partial a_{Ht}} + \beta(1-\gamma) \mathbf{E}_t [R_{t+1}^{-\gamma} (R_{H,t+1} - R_{1,t+1}) (1-c_t)^{1-\gamma} \\ &\quad \times \left(1\{\omega_{t+1} < 1\} j_{t+1} + 1\{\omega_{t+1} = 1\} \frac{\bar{u}^{1-\gamma}}{1-\gamma} \right)]. \end{aligned} \quad (42)$$

A.2 Solution in the Last Period with No Bequest Motive

A special case of the model is when the retiree has no bequest motive, which corresponds to the parameterization $\bar{u} = \infty$. In this case, the policy functions in the last period can be derived in closed form. This known solution serves as a useful starting point for numerically computing the solution when the retiree has a bequest motive.

The value function in the last period T is

$$j_T = \max_{c_T, a_T} \frac{u_T(c_T, a_{DT}, a_{HT})^{1-\gamma}}{1-\gamma}. \quad (43)$$

Because it is optimal to consume all financial wealth, the optimal portfolio shares in financial assets are

$$a_{1T} = -\lambda a_{DT}, \quad (44)$$

$$a_{2T} = 0, \quad (45)$$

$$a_{3T} = (Z_T - 1)a_{HT}, \quad (46)$$

where $Z_T = 1 + P_{3T}B_{3,T-1}/(Q_T H_T)$.

The problem is now reduced to that of maximizing the value function, subject to the constraint

$$(1 - \lambda)a_{DT} + Z_T a_{HT} = 1. \quad (47)$$

The first-order conditions imply that

$$c_T = \frac{(1 - \phi)(1 - Z_T a_{HT})}{1 - (1 - \phi)Z_T a_{HT}}, \quad (48)$$

$$a_{DT} = \frac{1 - Z_T a_{HT}}{1 - \lambda}, \quad (49)$$

$$a_{HT} = \left[Z_T + \frac{\phi^{1-\phi(1-\rho)}}{(1-\phi)^{(1-\phi)(1-\rho)}} \left(\frac{(1-\alpha)Z_T}{\alpha} \right)^\rho \left(\frac{(1-\lambda)^\phi P_T^\phi}{Q_T} \right)^{1-\rho} \right]^{-1}. \quad (50)$$

A.3 Solution by Numerical Dynamic Programming

I discretize the state space as

$$\begin{aligned} \{H_j\}_{j=1}^J &= \{H_P, H_F, H_G, H_{VG}, H_E\}, \\ \{B_k\}_{k=1}^K &= \{B_1, \dots, B_K\}, \\ \{P_l\}_{l=1}^L &= \{P_1, \dots, P_L\}. \end{aligned}$$

Table 6 reports the grid for the health stock. The grid for annuity holdings is equally spaced on a logarithmic scale, based on $K = 20$, $B_1 = 0.1$, and $B_K = 5$. The grid for the relative price of housing is equally spaced on a logarithmic scale, based on $L = 5$, $P_1 = 1$, and $P_L = 5$. I discretize the lognormal shock to risky assets, ν_{2t} , through five realizations with equal probability.

Starting with the solution in period T , I solve the problem recursively for periods $t = T - 1, \dots, 1$ through the following algorithm.

1. For each point on the discretized state space, find the policy functions that maximize the value function $j_t(H_j, B_k, P_l)$.
2. Compute the total wealth corresponding to the optimal portfolio share in health

through the relation

$$\widetilde{W}_t(H_j, B_k, P_l) = \frac{Q_t(H_j)H_j}{a_{Ht}(H_j, B_k, P_l)(1 - c_t(H_j, B_k, P_l))}.$$

A.4 Simulation of the Model

I simulate the retirement cycle for 100,000 retirees, starting at age 65–66. I set the initial price of housing at $P_1 = 1$ for all retirees. The initial distribution of health status is drawn from the empirical distribution of health status at age 65–66 for the 1931–1940 cohort. For each category of health status, $H_1 = \{H_P, H_F, H_G, H_{VG}, H_E\}$, I compute $B_0(H_1)$ such that

$$\frac{a_{31}(H_1, B_0(H_1), P_1)}{1 - a_{H1}(H_1, B_0(H_1), P_1)}$$

matches the portfolio share in the annuity, as a share of tangible wealth, in the HRS at age 65–66.

For periods $t = 2, \dots, T$, I simulate the retirement cycle for each retiree, until death, through the following algorithm.

1. Simulate the shocks to risky asset returns, housing returns, and the health stock.

Compute the gross return on total wealth,

$$R_t = \sum_{i=1}^3 a_{i,t-1}R_{it} + a_{D,t-1}R_{Dt} + a_{H,t-1}R_{Ht}.$$

2. Update the total wealth through the relation

$$\widetilde{W}_t = R_t \frac{Q_{t-1}H_{t-1}}{a_{H,t-1}}.$$

3. If there is an actuarially fair annuity market, update the annuity holdings through the

relation

$$B_{t-1} = \frac{a_{3,t-1}Q_{t-1}H_{t-1}}{P_{3,t-1}a_{H,t-1}}.$$

4. Update the health stock through a closest neighbor interpolation of H_t as a function of $\widetilde{W}_t(H_t, B_{t-1}, P_t)$.
5. Compute the optimal consumption and portfolio policies at the state (H_t, B_{t-1}, P_t) .

References

- Abel, Andrew B., and Mark Warshawsky, 1988, Specification of the joy of giving: Insights from altruism, *Review of Economics and Statistics* 70, 145–149.
- Ameriks, John, Andrew Caplin, Steven Laufer, and Stijn Van Nieuwerburgh, 2007, The joy of giving or assisted living? Using strategic surveys to separate bequest and precautionary motives, Working paper, New York University.
- Bell, Felicitie C., and Michael L. Miller, 2005, Life tables for the United States Social Security area 1900–2100, Actuarial Study No. 120, Social Security Administration.
- Blau, David M., and Donna B. Gilleskie, 2003, The role of retiree health insurance in the employment behavior of older men, Working Paper No. 10100, National Bureau of Economic Research.
- Bound, John, 1991, Self-reported versus objective measures of health in retirement models, *Journal of Human Resources* 26, 106–138.
- Bound, John, Michael Schoenbaum, Todd R. Stinebrickner, and Timothy Waidmann, 1999, The dynamic effects of health on the labor force transitions of older workers, *Labour Economics* 6, 179–202.
- Brown, Jeffrey R., Marcus D. Casey, and Olivia S. Mitchell, 2007, Who values the Social Security annuity? New evidence on the annuity puzzle, Working paper, University of Illinois at Urbana-Champaign.
- Cocco, João F., 2005, Portfolio choice in the presence of housing, *Review of Financial Studies* 18, 535–567.
- Cocco, João F., Francisco J. Gomes, and Pascal J. Maenhout, 2005, Consumption and portfolio choice over the life cycle, *Review of Financial Studies* 18, 491–533.

- Coile, Courtney C., and Kevin S. Milligan, 2006, How household portfolios evolve after retirement: The effect of aging and health shocks, Working Paper No. 12391, National Bureau of Economic Research.
- Davidoff, Thomas, Jeffrey R. Brown, and Peter A. Diamond, 2005, Annuities and individual welfare, *American Economic Review* 95, 1573–1590.
- De Nardi, Mariacristina, Eric French, and John Bailey Jones, 2006, Differential mortality, uncertain medical expenditures, and the savings of elderly singles, Working Paper No. 12554, National Bureau of Economic Research.
- Dwyer, Debra Sabatini, and Olivia S. Mitchell, 1999, Health problems as determinants of retirement: Are self-rated measures endogenous?, *Journal of Health Economics* 18, 173–193.
- Edwards, Ryan D., 2005, Health risk and portfolio choice, Working paper, RAND Corporation.
- French, Eric, and John Bailey Jones, 2004, The effects of health insurance and self-insurance on retirement behavior, Working paper, Federal Reserve Bank of Chicago.
- Friedman, Benjamin M., and Mark J. Warshawsky, 1990, The cost of annuities: Implications for saving behavior and bequests, *Quarterly Journal of Economics* 105, 135–54.
- Grossman, Michael, 1972, On the concept of health capital and the demand for health, *Journal of Political Economy* 80, 223–255.
- Gustman, Alan L., Olivia S. Mitchell, Andrew A. Samwick, and Thomas L. Steinmeier, 1997, Pension and Social Security wealth in the Health and Retirement Study, Working Paper No. 5912, National Bureau of Economic Research.
- Hu, Xiaoqing, 2005, Portfolio choices for homeowners, *Journal of Urban Economics* 58, 114–136.

- Hubbard, R. Glenn, Jonathan Skinner, and Stephen P. Zeldes, 1994, The importance of precautionary motives in explaining individual and aggregate saving, *Carnegie-Rochester Conference Series on Public Policy* 40, 59–125.
- Hurd, Michael D., 2002, Portfolio holdings of the elderly, in Luigi Guiso, Michael Haliassos, and Tullio Jappelli, ed.: *Household Portfolios* . chap. 11, pp. 431–472 (MIT Press: Cambridge, MA).
- Jacobson, Lena, 2000, The family as producer of health – an extended Grossman model, *Journal of Health Economics* 19, 611–637.
- Khwaja, Ahmed W., 2002, Health insurance, habits and health outcomes: Moral hazard in a dynamic stochastic model of investment in health, Working paper, Duke University.
- Lillard, Lee A., and Yoram Weiss, 1997, Uncertain health and survival: Effects on end-of-life consumption, *Journal of Business and Economic Statistics* 15, 254–268.
- Love, David A., 2008, Marital status and portfolio choice, Working paper, Williams College.
- Love, David A., and Maria G. Perozek, 2007, Should the old play it safe? Portfolio choice with uncertain medical expenses, Working paper, Williams College.
- Madrian, Brigitte C., 1994, The effect of health insurance on retirement, *Brookings Papers on Economic Activity* 1, 181–232.
- McGarry, Kathleen, 2004, Health and retirement: Do changes in health affect retirement expectations?, *Journal of Human Resources* 39, 624–648.
- Mitchell, Olivia S., James M. Poterba, Mark J. Warshawsky, and Jeffrey R. Brown, 1999, New evidence on the money’s worth of individual annuities, *American Economic Review* 89, 1299–1318.
- Palumbo, Michael G., 1999, Uncertain medical expenses and precautionary saving near the end of the life cycle, *Review of Economic Studies* 66, 395–421.

- Pang, Gaobo, and Mark Warshawsky, 2007, Optimizing the equity-bond-annuity portfolio in retirement: The impact of uncertain health expenses, Technical Paper No. 07/14, Watson Wyatt Worldwide.
- Picone, Gabriel, Martin Uribe, and R. Mark Wilson, 1998, The effect of uncertainty on the demand for medical care, health capital and wealth, *Journal of Health Economics* 17, 171–185.
- Rogowski, Jeannette, and Lynn Karoly, 2000, Health insurance and retirement behavior: Evidence from the Health and Retirement Survey, *Journal of Health Economics* 19, 529–539.
- Rosen, Harvey S., and Stephen Wu, 2004, Portfolio choice and health status, *Journal of Financial Economics* 72, 457–484.
- Sinai, Todd, and Nicholas S. Souleles, 2007, Net worth and housing equity in retirement, Working Paper No. 13693, National Bureau of Economic Research.
- Turra, Cassio M., and Olivia S. Mitchell, 2004, The impact of health status and out-of-pocket medical expenditures on annuity valuation, Working paper, University of Pennsylvania.
- Venti, Steven F., and David A. Wise, 1989, Aging, moving, and housing wealth, in David A. Wise, ed.: *The Economics of Aging* . chap. 1, pp. 9–48 (The University of Chicago Press: Chicago).
- Venti, Steven F., and David A. Wise, 2004, Aging and housing equity: Another look, in David A. Wise, ed.: *Perspectives on the Economics of Aging* . chap. 3, pp. 127–175 (The University of Chicago Press: Chicago).
- Viscusi, W. Kip, and William N. Evans, 1990, Utility functions that depend on health status: Estimates and economic implications, *American Economic Review* 80, 353–374.

- Wagstaff, Adam, 1986, The demand for health: Some new empirical evidence, *Journal of Health Economics* 5, 195–233.
- Wallace, Robert B., and A. Regula Herzog, 1995, Overview of the health measures in the Health and Retirement Study, *Journal of Human Resources* 30, 84–107.
- Warshawsky, Mark, 1988, Private annuity markets in the United States: 1919–1984, *Journal of Risk and Insurance* 55, 518–528.
- Yaari, Menahem E., 1965, Uncertain lifetime, life insurance, and the theory of the consumer, *Review of Economic Studies* 32, 137–150.
- Yao, Rui, and Harold H. Zhang, 2005, Optimal consumption and portfolio choices with risky housing and borrowing constraints, *Review of Financial Studies* 18, 197–239.

Table 1: Health Expenditure by Age and Health Status

The table reports the median of health expenditures by age and health status. Health expenditures are annualized, deflated by the CPI for medical care, and reported in real 2000 dollars. Health expenditures include the cost of hospitals, nursing homes, doctor visits, dentist visits, outpatient surgery, prescription drugs, home health care, and special facilities. The sample consists of retired unmarried females, born 1901 to 1940 and aged 65 to 96, in the HRS.

Health Status	Age			
	65–72	73–80	81–88	89–96
Panel A: Total Health Expenditure (\$ per Year)				
Poor	7,813	5,145	4,127	4,622
Fair	2,745	2,976	3,324	2,943
Good	2,191	2,273	2,419	2,273
Very Good	902	1,243	1,264	1,484
Excellent	904	851	604	1,353
All Retirees	2,141	2,273	2,500	2,399
Panel B: Out-of-Pocket Health Expenditure (\$ per Year)				
Poor	920	768	864	853
Fair	636	709	722	805
Good	502	594	609	656
Very Good	360	449	426	450
Excellent	400	237	302	567
All Retirees	480	551	582	646

Table 2: Health Care Utilization Rates by Age and Health Status

The table reports the percentage of retirees, by age and health status, utilizing the indicated health care in the two years prior to the interview. The sample consists of retired unmarried females, born 1901 to 1940 and aged 65 to 96, in the HRS.

Health Status	Age			
	65–72	73–80	81–88	89–96
Panel A: Doctor and Dentist Visits (% of Retirees)				
Poor	99	99	98	98
Fair	98	98	98	97
Good	98	98	97	96
Very Good	95	97	96	97
Excellent	97	95	89	87
All Retirees	97	98	97	96
Panel B: Prescription Drugs (% of Retirees)				
Poor	97	95	93	96
Fair	93	91	93	94
Good	84	87	88	85
Very Good	72	77	79	83
Excellent	61	65	60	64
All Retirees	81	84	86	87
Panel C: Hospitals and Outpatient Surgery (% of Retirees)				
Poor	63	73	66	72
Fair	52	53	59	49
Good	41	46	46	48
Very Good	25	33	40	40
Excellent	25	28	33	26
All Retirees	39	45	50	48
Panel D: Nursing Homes, Home Health Care, and Special Facilities (% of Retirees)				
Poor	43	47	55	56
Fair	23	26	38	43
Good	14	19	27	30
Very Good	6	9	16	32
Excellent	7	7	11	27
All Retirees	16	20	30	37

Table 3: Estimation of the Out-of-Pocket Health Expenditure Share

The table reports estimates of a censored regression model for the out-of-pocket health expenditure share. The latent variable depends on cohort dummies, health status, age, and the interaction of health status with age. Health expenditures include the cost of hospitals, nursing homes, doctor visits, dentist visits, outpatient surgery, prescription drugs, home health care, and special facilities. The sample consists of retired unmarried females, born 1901 to 1940 and aged 65 to 96, in the HRS.

Regressor	Coefficient	<i>t</i> -statistic
Cohort:		
1901–1910	0.00	0.09
1911–1920	-0.02	-0.46
1921–1930	0.00	-0.07
Health Status:		
Poor	-0.19	-4.18
Fair	-0.06	-1.81
Very Good	0.09	2.67
Excellent	0.07	1.56
(Age – 65)/10	0.01	0.48
× Poor	0.04	1.36
× Fair	0.01	0.60
× Very Good	-0.04	-1.70
× Excellent	-0.07	-2.09
Intercept	0.42	17.04

Table 4: Estimation of the Transition Probabilities for Health Status

The table reports estimates of an ordered probit model for predicting health status in the subsequent period. The latent variable depends on cohort dummies, current health status, age, and the interaction of current health status with age. The latent variable also depends on log total health expenditure in the subsequent period, where expenditures below \$500 are truncated at \$500. The sample consists of retired unmarried females, born 1901 to 1940 and aged 65 to 96, in the HRS.

Regressor	Coefficient	<i>t</i> -statistic
Cohort:		
1901–1910	-0.14	-1.00
1911–1920	0.04	0.44
1921–1930	0.09	1.43
Health Status:		
Poor	-1.43	-15.29
Fair	-0.71	-9.07
Very Good	0.83	10.07
Excellent	1.51	10.84
(Age – 65)/10	-0.17	-2.80
× Poor	0.18	2.54
× Fair	0.03	0.48
× Very Good	-0.16	-2.48
× Excellent	-0.15	-1.38
Health Expenditure	0.06	5.47
Intercept:		
Poor	-1.35	-11.89
Fair	-0.77	-7.23
Good	0.05	0.45
Very Good	1.00	9.90
Excellent	2.13	20.38

Table 5: Estimation of Asset Allocation in the HRS

The table reports estimates of a censored regression model for the portfolio share in each of the four asset classes. The latent variable depends on cohort dummies, health status, age, and the interaction of health status with age. Bonds include checking, savings, and money market accounts; CD, government savings bonds, and T-bills; bonds and bond funds; and the safe part of IRA and Keogh accounts. The value of liabilities is subtracted from the value of bonds, which include all mortgages for primary residence; all mortgages for secondary residence; other home loans for primary residence; and other debt. Risky assets include businesses; stocks, mutual funds, and investment trusts; and the risky part of IRA and Keogh accounts. Housing includes primary and secondary residence. Annuities include employer pension or annuity; Social Security disability and supplemental security income; and Social Security retirement. The sample consists of retired unmarried females, born 1901 to 1940 and aged 65 to 96, in the HRS.

Regressor	Bonds		Risky Assets		Annuity		Housing	
	Coefficient	<i>t</i> -statistic	Coefficient	<i>t</i> -statistic	Coefficient	<i>t</i> -statistic	Coefficient	<i>t</i> -statistic
Cohort:								
1901–1910	0.03	1.73	-0.15	-3.93	0.12	3.99	-0.12	-3.38
1911–1920	0.00	-0.05	-0.11	-4.07	0.09	4.70	-0.05	-2.08
1921–1930	0.00	-0.33	-0.01	-0.55	0.05	3.46	0.00	0.07
Health Status:								
Poor	-0.04	-2.45	-0.18	-4.50	0.12	4.63	-0.07	-2.21
Fair	-0.03	-2.77	-0.12	-4.57	0.09	4.48	-0.03	-1.16
Very Good	0.03	2.40	0.11	4.77	-0.10	-5.35	0.06	2.74
Excellent	0.02	1.15	0.14	4.59	-0.16	-6.24	0.14	4.47
(Age – 65)/10	0.06	6.50	0.05	3.04	-0.13	-9.77	0.04	2.50
× Poor	0.00	0.20	0.00	-0.18	0.00	0.05	0.00	0.04
× Fair	0.01	1.15	0.01	0.65	-0.01	-1.00	0.00	-0.23
× Very Good	-0.01	-0.71	-0.04	-2.30	0.04	2.69	-0.04	-2.19
× Excellent	0.00	-0.07	-0.05	-2.10	0.05	2.85	-0.05	-2.37
Intercept	0.03	3.08	-0.13	-6.81	0.69	48.84	0.14	8.08

Table 6: Model Parameters in the Benchmark Calibration

The table summarizes the model parameters in the benchmark calibration. The model is solved at a two-year frequency to match the frequency of interviews in the HRS. The parameter values are reported in annualized units. The grid for the health stock is based on the normalization that the initial distribution of health at age 65–66 is $\log H_1 \sim \mathbf{N}(0, 1)$.

Parameter	Symbol	Value
Preferences:		
Discount factor	β	0.96
Relative risk aversion	γ	6
Utility weight on housing	ϕ	0.10
Utility weight on health	α	0.90
Elasticity of substitution between consumption and health	ρ	0.10
Joy-of-giving bequest motive	\bar{u}	0.17
Asset returns:		
Bond return	$\bar{R}_1 - 1$	2.6%
Average risky-asset return	$\bar{R}_2 - 1$	5.6%
Standard deviation of risky-asset return	σ_2	17.2%
Average annuity return	$\bar{R}_3 - 1$	2.6%
Housing:		
Borrowing limit	λ	20%
Depreciation rate	δ	1.14%
Average housing return	$\bar{R}_D - 1$	2.2%
Standard deviation of housing return	σ_D	7.0%
Health:		
Poor health	H_P	0.18
Fair health	H_F	0.42
Good health	H_G	0.90
Very good health	H_{VG}	1.99
Excellent health	H_E	5.06
Growth rate of the relative price of medical expenditure	q	1.9%

Table 7: Asset Allocation of Simulated Retirees at Age 65–66

The table reports the portfolio share in each of the four tangible assets at age 65–66. From left to right, the columns correspond to actual retirees in the HRS, simulated retirees in the benchmark calibration, and simulated retirees in an economy with an actuarially fair annuity market. The portfolio shares for the HRS, based on the estimated censored regression model in Table 5, are those for the 1931–1940 cohort.

Health Status	HRS	Simulated Model	
		Benchmark	Annuity Market
Panel A: Bonds (% of Tangible Wealth)			
Poor	2	5	5
Fair	1	3	7
Good	3	4	4
Very Good	2	3	0
Excellent	1	10	-3
Panel B: Risky Assets (% of Tangible Wealth)			
Poor	3	5	6
Fair	5	8	7
Good	8	12	12
Very Good	13	18	18
Excellent	14	18	14
Panel C: Annuity (% of Tangible Wealth)			
Poor	76	76	77
Fair	74	74	75
Good	67	67	67
Very Good	58	58	62
Excellent	53	53	72
Panel D: Housing (% of Tangible Wealth)			
Poor	18	13	12
Fair	20	15	11
Good	22	17	17
Very Good	26	20	20
Excellent	32	18	17

Table 8: Asset Allocation of Simulated Retirees at Age 91–92

The table reports the portfolio share in each of the four tangible assets at age 91–92. From left to right, the columns correspond to actual retirees in the HRS, simulated retirees in the benchmark calibration, and simulated retirees in an economy with an actuarially fair annuity market. The portfolio shares for the HRS, based on the estimated censored regression model in Table 5, are those for the 1931–1940 cohort.

Health Status	HRS	Simulated Model	
		Benchmark	Annuity Market
Panel A: Bonds (% of Tangible Wealth)			
Poor	21	22	21
Fair	21	20	22
Good	19	20	18
Very Good	22	14	12
Excellent	20	25	3
Panel B: Risky Assets (% of Tangible Wealth)			
Poor	7	9	9
Fair	10	11	11
Good	14	15	13
Very Good	15	14	10
Excellent	15	20	16
Panel C: Annuity (% of Tangible Wealth)			
Poor	48	51	52
Fair	42	46	45
Good	37	37	43
Very Good	37	44	54
Excellent	36	24	50
Panel D: Housing (% of Tangible Wealth)			
Poor	25	19	18
Fair	27	23	22
Good	30	28	26
Very Good	27	28	24
Excellent	29	31	31

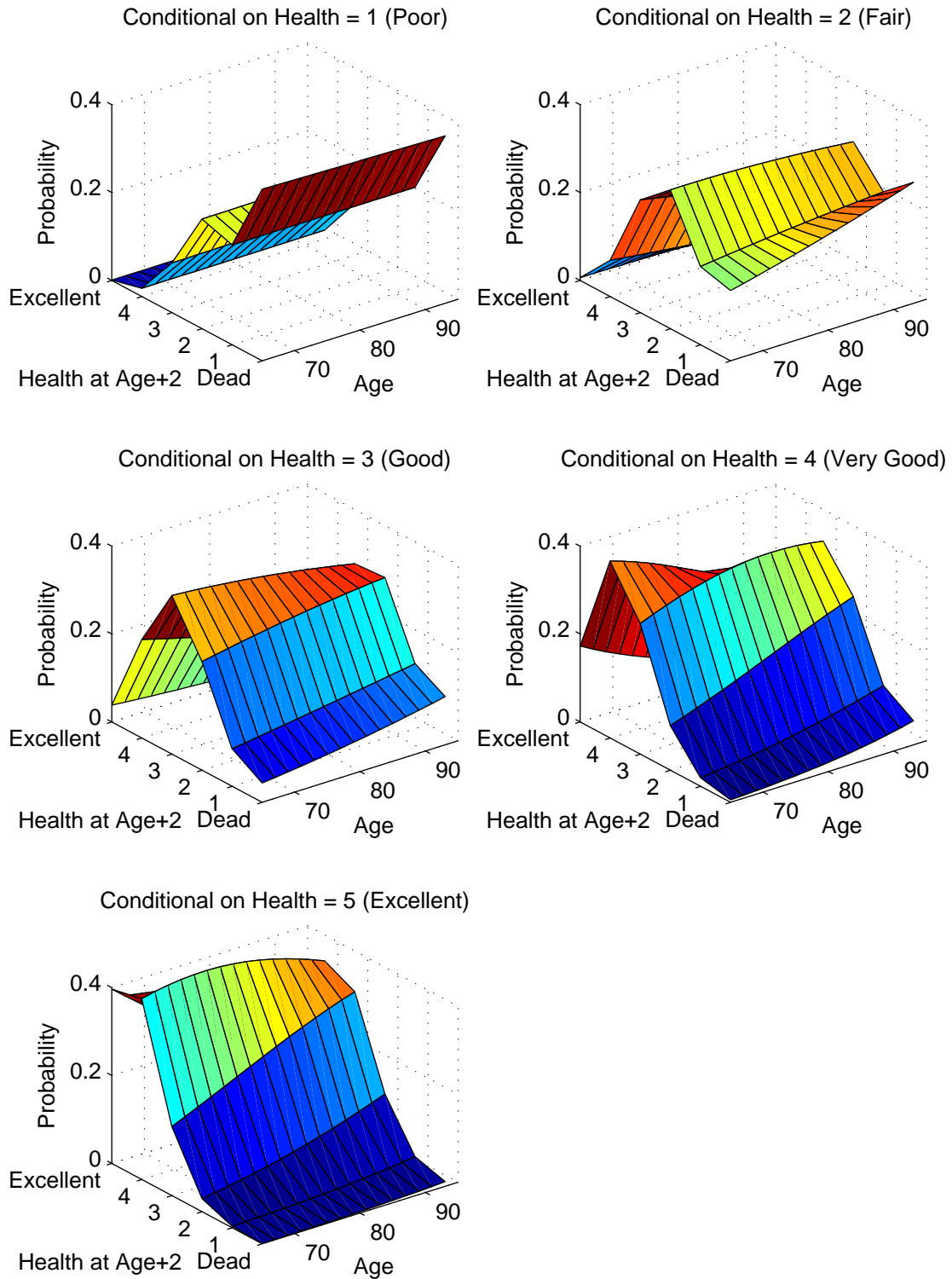


Figure 1: Transition Probabilities for Health Status

The ordered probit model, reported in Table 4, is used to predict the transition probabilities for health status. The predicted probabilities are those for retired unmarried females, born in the 1931–1940 cohort, with medical expenditures below \$500.

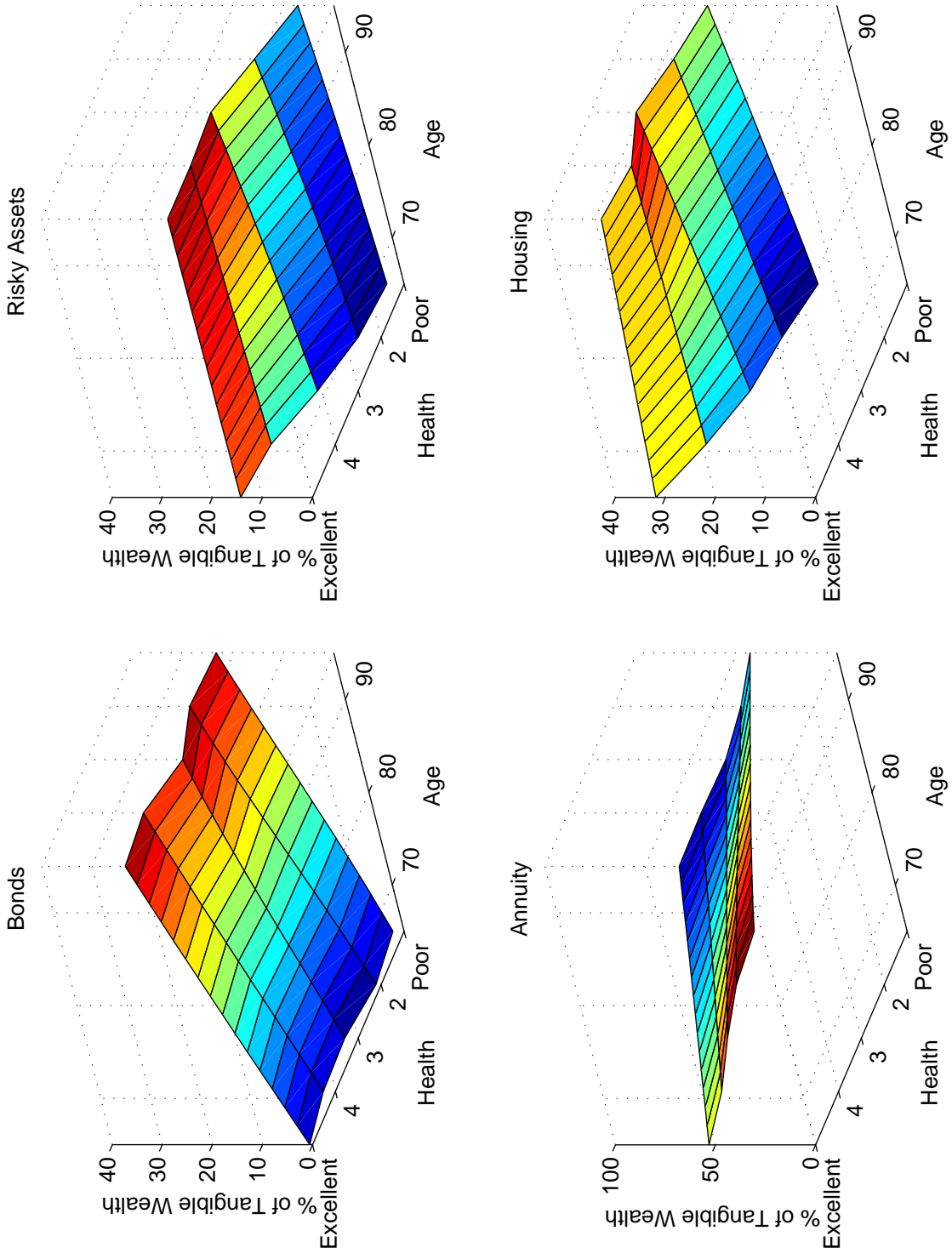


Figure 2: Asset Allocation by Age and Health Status in the HRS
 The censored regression model, reported in Table 5, is used to predict the portfolio share in each of the four tangible assets. The predicted portfolio shares are for retired unmarried females, born in the 1931–1940 cohort.

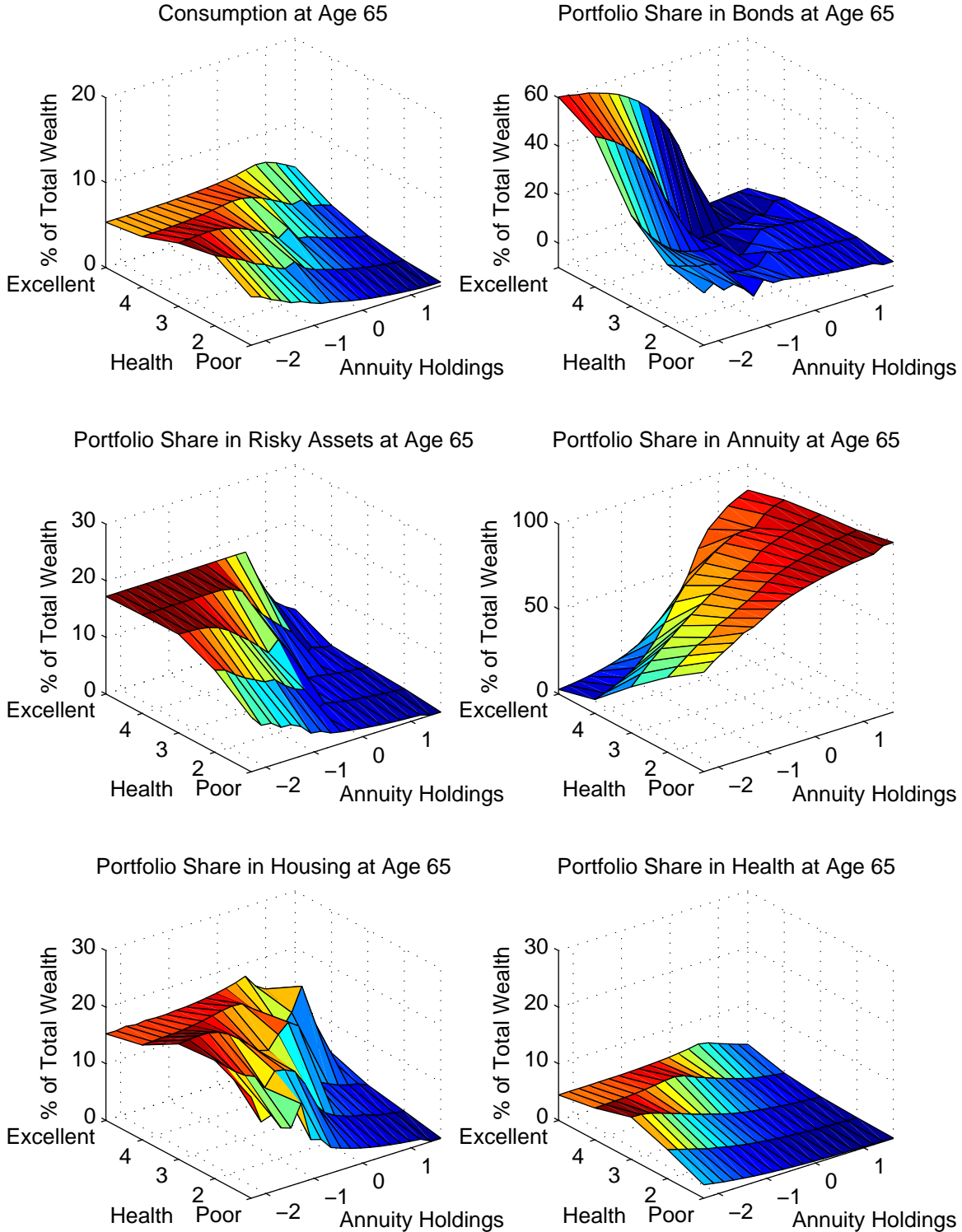


Figure 3: Consumption and Portfolio Policy Functions at Age 65–66

The consumption policy function is shown as a share of total wealth, $c_t = C_t/\widetilde{W}_t$. The portfolio policy functions are shown as a share of total savings, $a_{it} = A_{it}/(\widetilde{W}_t - C_t)$ for all assets $i = 1, 2, 3, D, H$. All policy functions are shown as a function of health status, $H_t \in \{H_P, H_F, H_G, H_{VG}, H_E\}$, and log of initial annuity holdings, $\log B_0$. The relative price of housing is held constant at $P_1 = 1$.

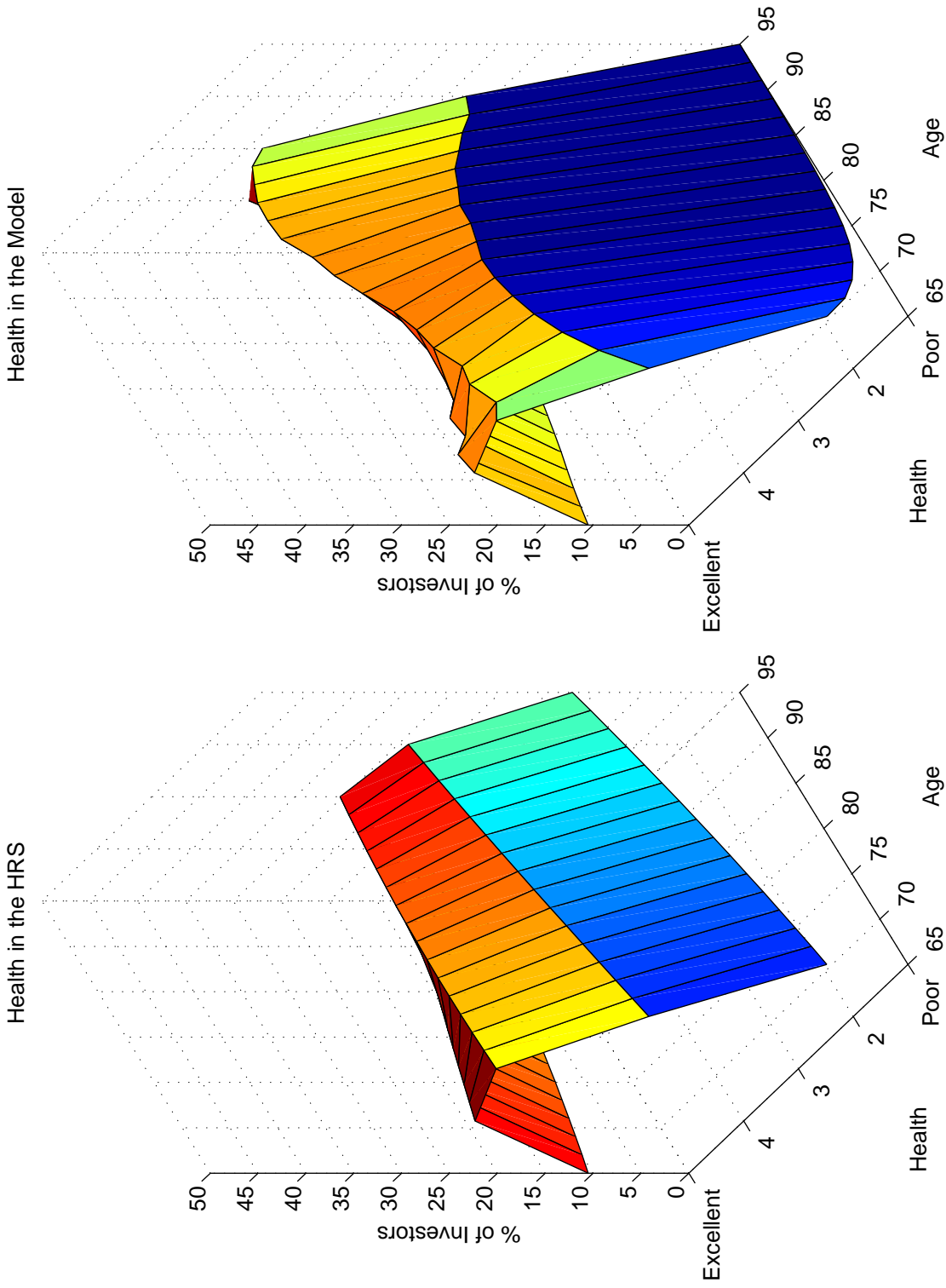


Figure 4: Distribution of Health Status by Age

An ordered probit model is used to predict the distribution of health status at each age. The latent variable depends on cohort dummies, health status, age, and the interaction of health status with age. The left panel shows the predicted distribution of health status at each age for retired unmarried females, born in the 1931–1940 cohort. The right panel shows the distribution of health status at each age for simulated retirees in the benchmark calibration.

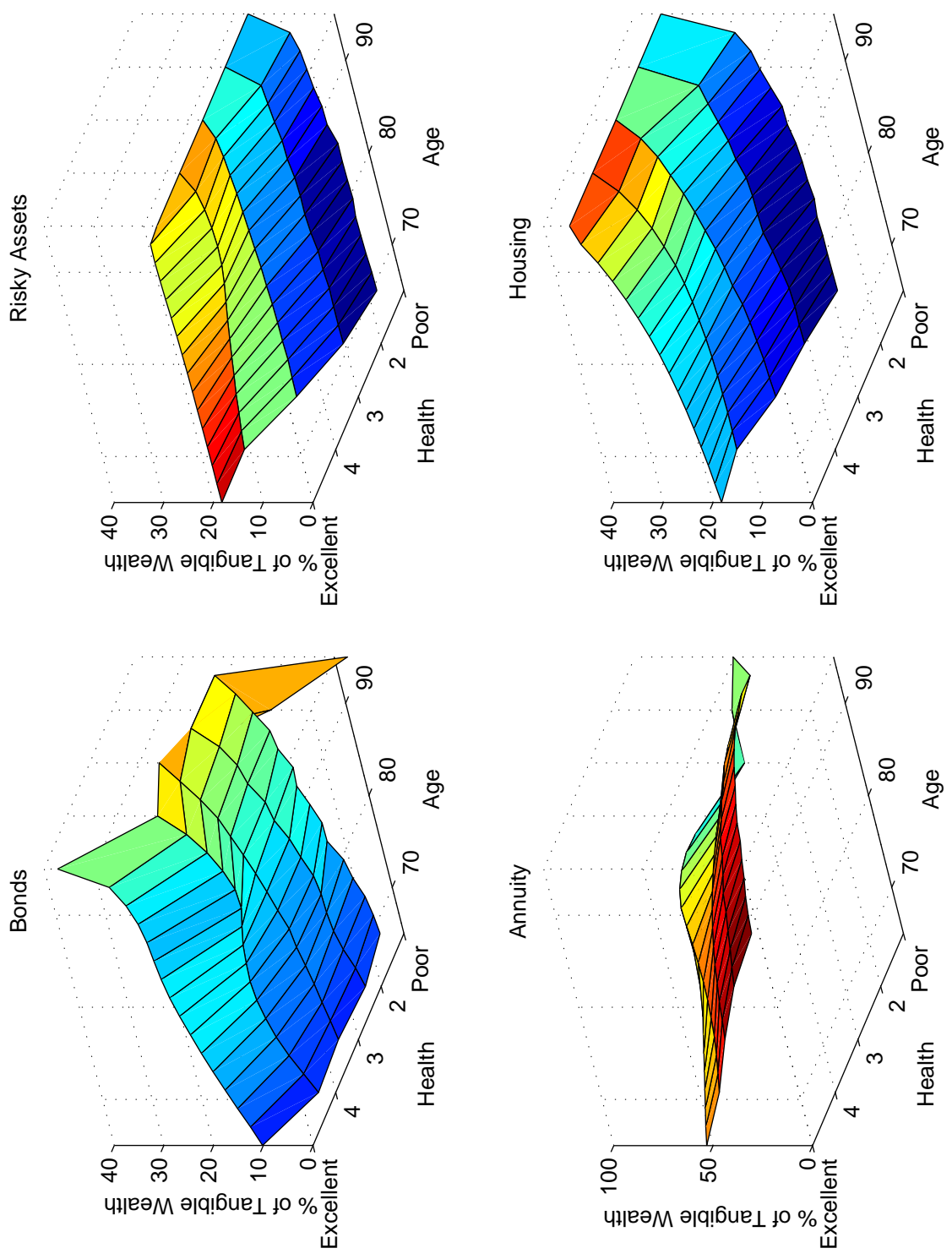


Figure 5: Asset Allocation of Simulated Retirees in the Benchmark Calibration
 The figure shows the portfolio share in each of the four tangible assets as a function of age and health status. The portfolio shares are those for simulated retirees in the benchmark calibration.

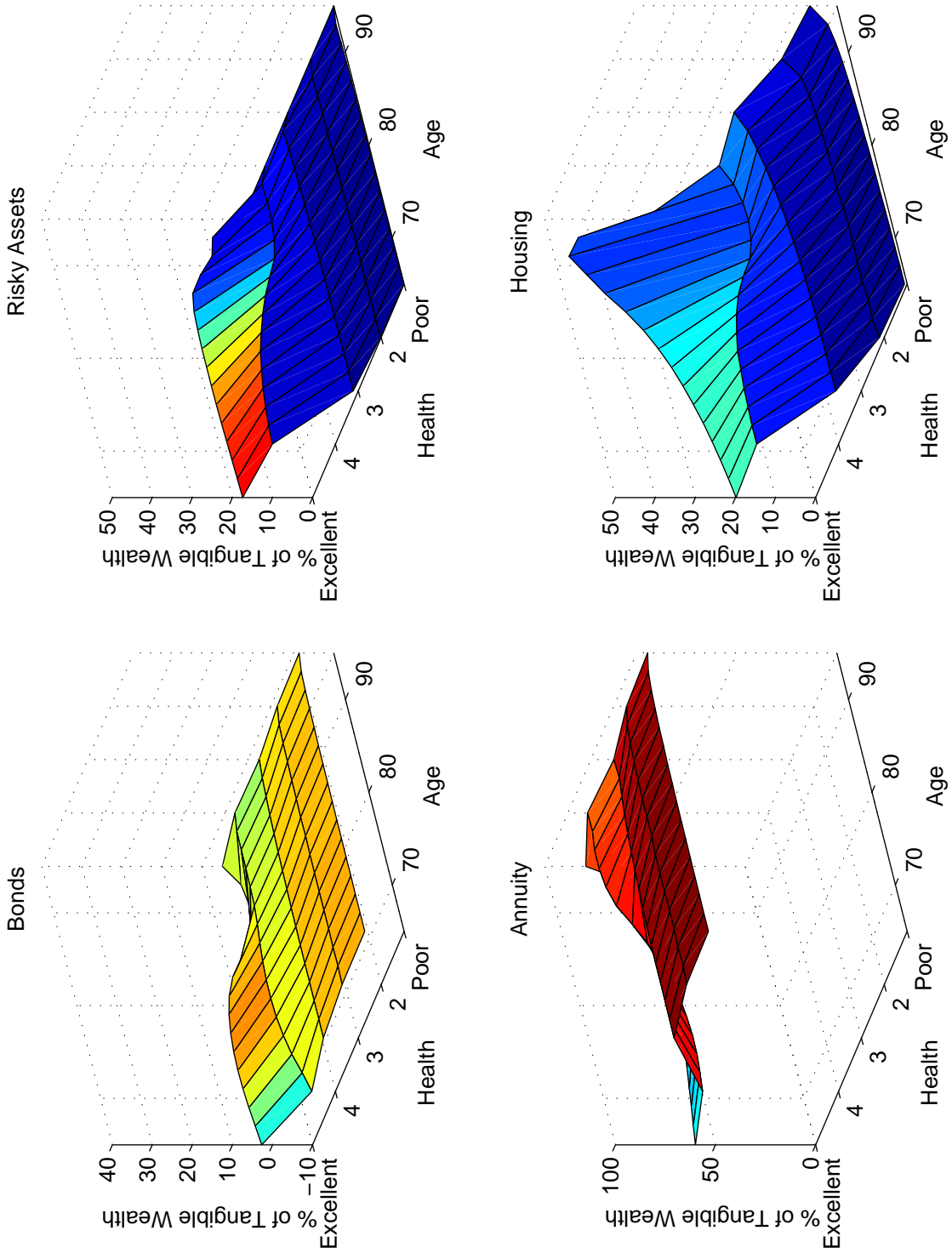


Figure 6: Asset Allocation of Simulated Retirees with No Bequest Motive
 The figure shows the portfolio share in each of the four tangible assets as a function of age and health status. The portfolio shares are those for simulated retirees with no bequest motive.

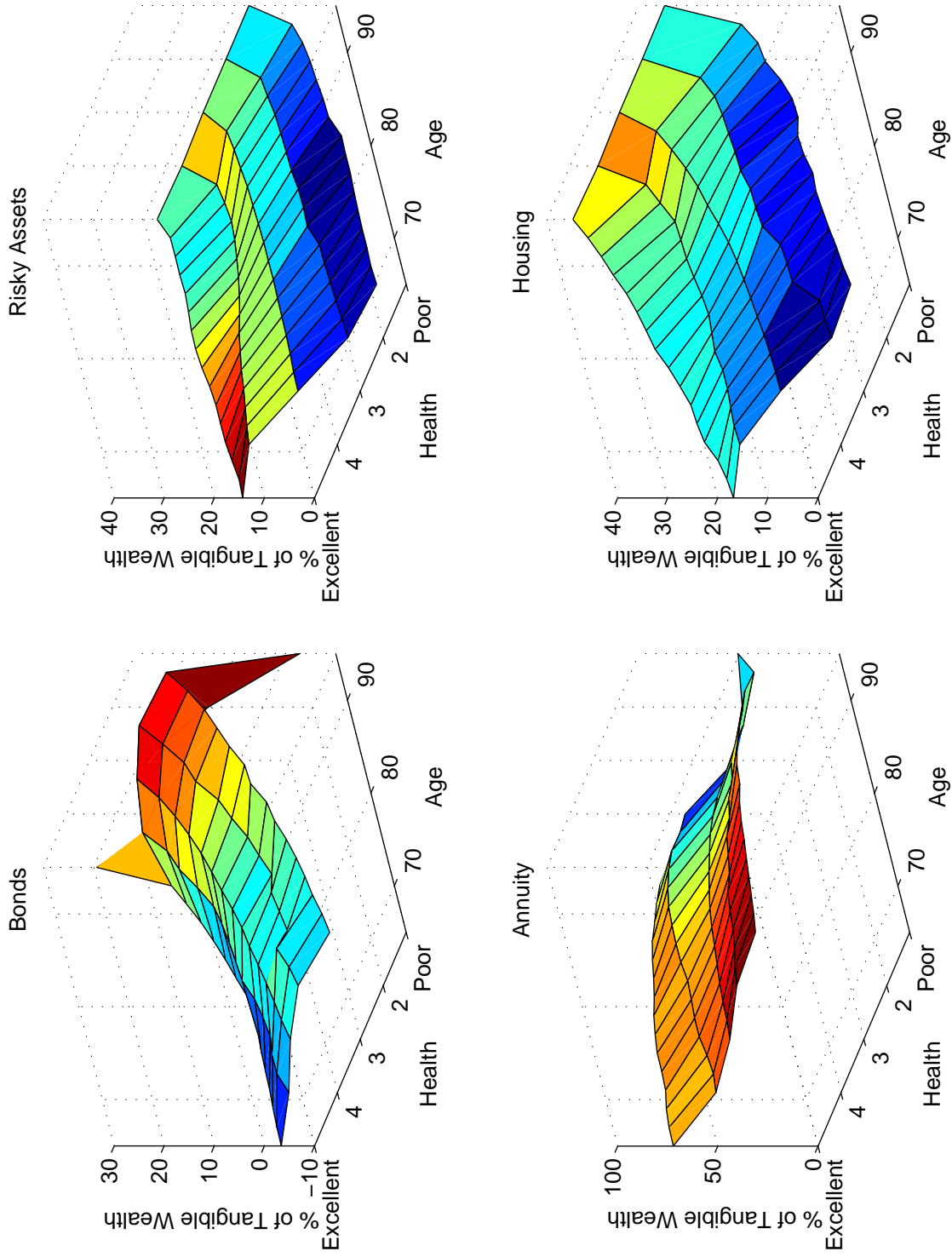


Figure 7: Asset Allocation of Simulated Retirees with an Actuarially Fair Annuity Market. The figure shows the portfolio share in each of the four tangible assets as a function of age and health status. The portfolio shares are those for simulated retirees in an economy with an actuarially fair annuity market.